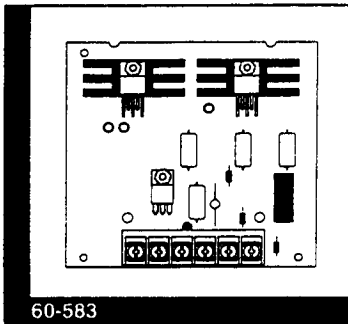


Audio Siren Booster

Document Number: 46-680 Rev. C
June 1994

Audio Siren Booster



INSTALLATION INSTRUCTIONS

Product Summary

The Audio Siren Booster provides an amplified output for interior and exterior speakers.

The booster is designed for use in two applications:

- 1) **Systems with interior speakers only** — provides loud voice alarm messages and voice status messages. Status message volume is controlled by adjusting the status message volume potentiometer (pot) on the Control Panel (Panel).
- 2) **Systems with interior and exterior speakers** — provides loud voice alarm messages and voice status messages. This application requires turning the status message volume pot on the Panel all the way down to eliminate voice status messages (in non-alarm conditions such as status requests, sensor testing, etc.) from sounding over the exterior speaker. Although this also eliminates voice status messages over interior speakers, status messages are still accessible from any on-site Touch Tone phone.

Note: The status message volume pot affects only voice status messages. Voice alarm messages are always at full volume.

Tools Needed

- Phillips screwdriver
- Two 6-32 x 3/8" machine screws (included)

Installing the Audio Siren Booster

Use the following procedure to install the booster on the Panel:

- 1) Remove the Panel cover and turn the power switch off.
- 2) Hold the booster so that the terminal strip is located at the bottom (see Figure 1).
- 3) Place the notches at the top of the booster (see Figure 1) against the bottom of the Control Panel battery support brackets (see Figure 2).

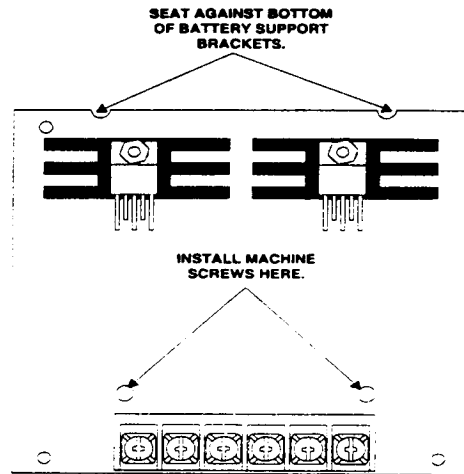


Figure 1. Audio Booster Notch and Screw Locations

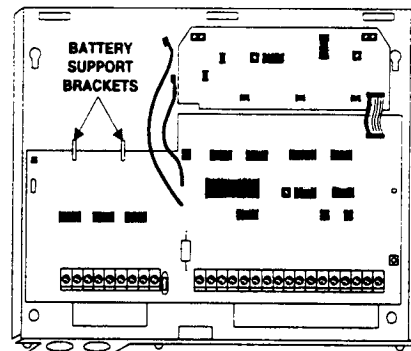


Figure 2. Battery Support Bracket Locations

- 4) Install the two machine screws (included) at the locations shown in Figure 1.

Wiring Connections

Use the following procedure to make the necessary wiring connections:

- 1) Connect terminals 1-4 of the booster to terminals 11, 15, 16, and 22 on terminal strip 2 of the Panel as shown in Figure 3.

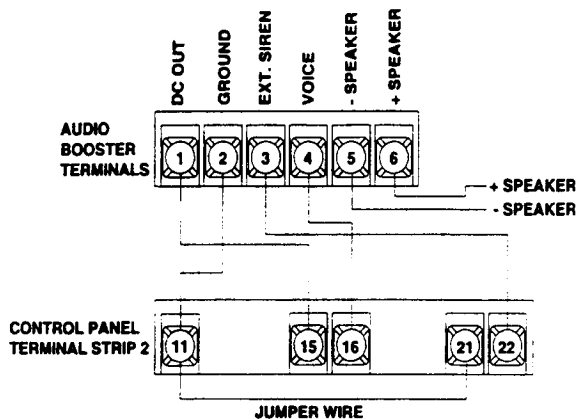


Figure 3. Wiring Connections Between the Audio Booster and Panel

- 2) Connect a jumper wire on terminal strip 2 of the Panel from terminal 11 to terminal 21 as shown in Figure 3.
- 3) Connect the speaker(s) to the booster terminals 5 and 6 as shown in Figure 4.

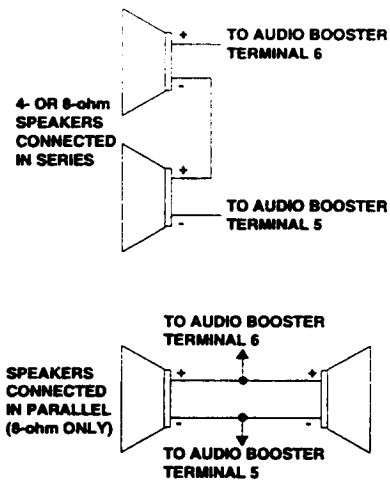


Figure 4. Speaker Connections

Note: The minimum load on terminals 5 and 6 must not be less than 4 ohms; otherwise, damage to the Panel and/or Audio Siren Booster may result.

Testing

Use the following procedure to test the operation of the Audio Siren Booster and the connected speakers:

- 1) Turn the Control Panel power switch on.
- 2) Replace the Control Panel cover.
- 3) If the system is monitored, notify a central station operator that you will be setting off alarm conditions for testing.
- 4) Initiate a fire alarm. After the exterior siren delay expires (default 15 seconds), speakers connected to the booster should alternate sounds of a loud steady tone and the voice message, "Fire! Fire! Sensor nn."
- 5) Cancel the alarm by entering CODE + 1.

Note: After canceling the alarm, note the volume level of the status message over interior speakers and adjust the status message volume pot accordingly (see Figure 5). For systems with exterior sirens only, adjust the pot fully clockwise so that status messages are not audible.

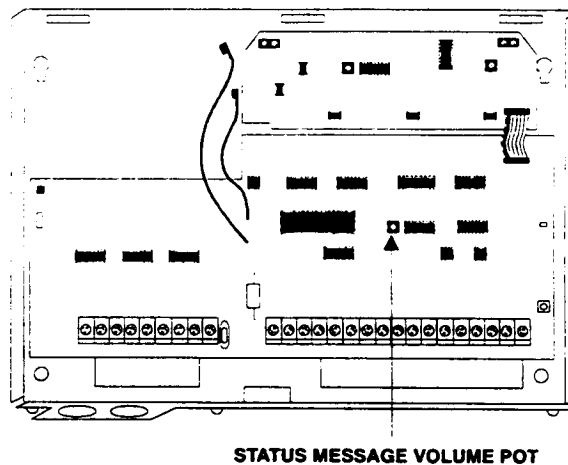


Figure 5. Status Message Volume Pot Location

- 6) Arm the system to level 2 or level 3.
- 7) Initiate an intrusion alarm by activating an *instant* sensor. After the exterior siren delay expires (default 15 seconds), speakers connected to the booster should alternate sounds of a loud on/off tone and the voice message, "Intrusion! Intrusion! Sensor nn."
- 8) Disarm the system and cancel the alarm by entering CODE + 1.

Specifications

Compatibility: CareTaker *Plus* Control Panel

Power Requirements: 6.8 VDC

Current Draw: 300-400 mA (in alarm)

Operating Temperature Range: 42° to 95°F

Dimensions: 4-1/4" x 4" (L x W)

Notices

This device complies with part 15 of the FCC rules. Operation is subject to the following two conditions:

- 1) This device may cause harmful interference.
- 2) This device must accept any interference received, including interference that may cause undesired operation.

Changes or modifications not expressly approved by Interactive Technologies, Inc. can void the users' authority to operate the equipment.



Interactive Technologies, Inc.
2266 North Second Street
North Saint Paul, MN 55109
1-800-777-1415

CareTaker and ITI are registered trademarks of Interactive Technologies, Inc.